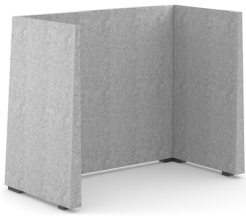
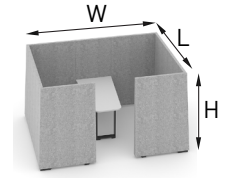
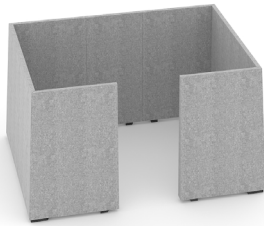


JAZZ SILENT BOX

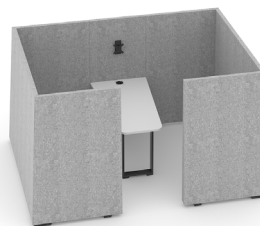
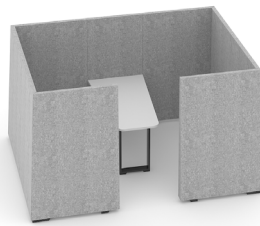
TECHNICAL INFORMATION



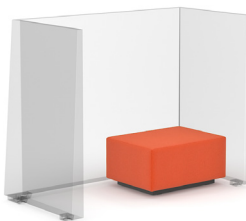
L 1810
W 925
H 1420



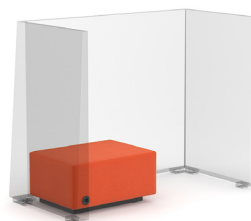
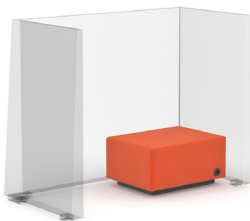
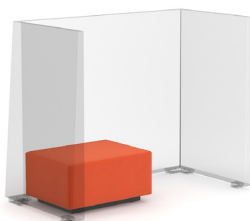
L 1810
W 2500
H 1420



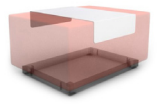
L 118
W 44
H 121



L 800
W 600
H 400



L 800
W 200
H 300



L 602
W 400
H 122

Acoustic walls

Frame

- Made of 18 mm medium density fibre-board and 18 mm chipboard;
- Coated with specially shaped foam VB2540 (density: 25 kg/m³) from outside and acoustic foam from the inside.

Legs

- Made of MDF painted in black colour, H=39 mm.

Poufs

Frame

- Made of 15 mm plywood and 15 mm chipboard.

Seat

- Upper part is foam coated HR5050 (density: 48-51 kg/m³), lower layer of the foam HR3030 (density: 28-32 kg/m³); frame sides are foam coated HR3030 (density: 28-32 kg/m³).

Base

- Black painted rectangular metal base (50x20x1,5 mm) with 4 plastic glides (5 mm);
- Ability to order linking parts (2 pcs.), which allow linkage of the poufs to lines.

Cushion

- Made of foam (HR3538), upholstered with fabric;
- Zipper sewn into the lower part.

Power socket

- Power sockets by "Bachmann" (EU, UK, FR);
- 1 socket for 230 V;
- Cable length 1,5 meters;

Desk and linking central wall

Desktop

- 1200x650 mm, made of 25 mm LMDP (height of the desk 663 mm);
- Power socket with 4 wire management holes is mounted into the desktop (only for AGS183);
- Metal box for wire management is fixed under the desktop: 185x150 mm, H=100 mm if there is a power socket.

Leg

- Made of metal tube: 70x20x2 mm;
- Black painted leg glides are made of MDF, H=16 mm.

Frame

- Made of MDF (18 mm) and MFC (melamine; 18 mm);
- Fittings are placed on the side to attach other walls.

Foam

- Frame is coated with specially shaped foam from outside and acoustic foam from the inside.

Legs

- Black painted MDF legs, H=39.

Monitor holder

- Three height adjustable positions;
- VESA standards – 75x75, 100x100 mm;
- Recommended weight up to 10 kg.

Wire management

- Space with zippers for wire management.

MATERIALS

Fabric:

VELITO PRESTO

Melamine:



M1

Metal:



E



S



A

FEATURES

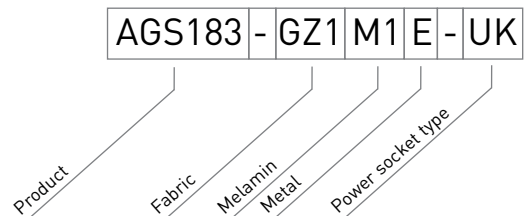
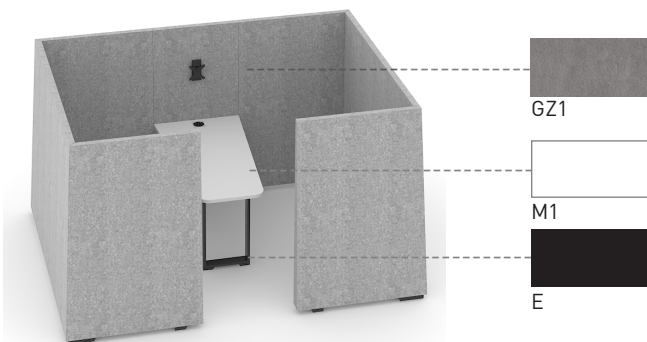
- Design by Christina Strand and Niels Hvass | Denmark
- Walls filled with sound absorbing material

GUARANTEE

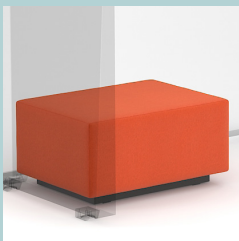
- 5 year

ORDERING EXAMPLE

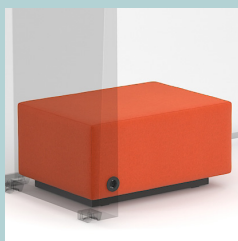
Code structure



Optional



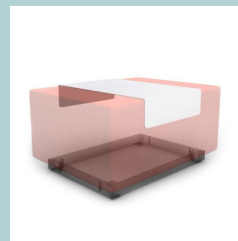
Pouf



Pouf with power socket



Cushion



Metal table for poufs



Metal accessory
„Do not disturb man“